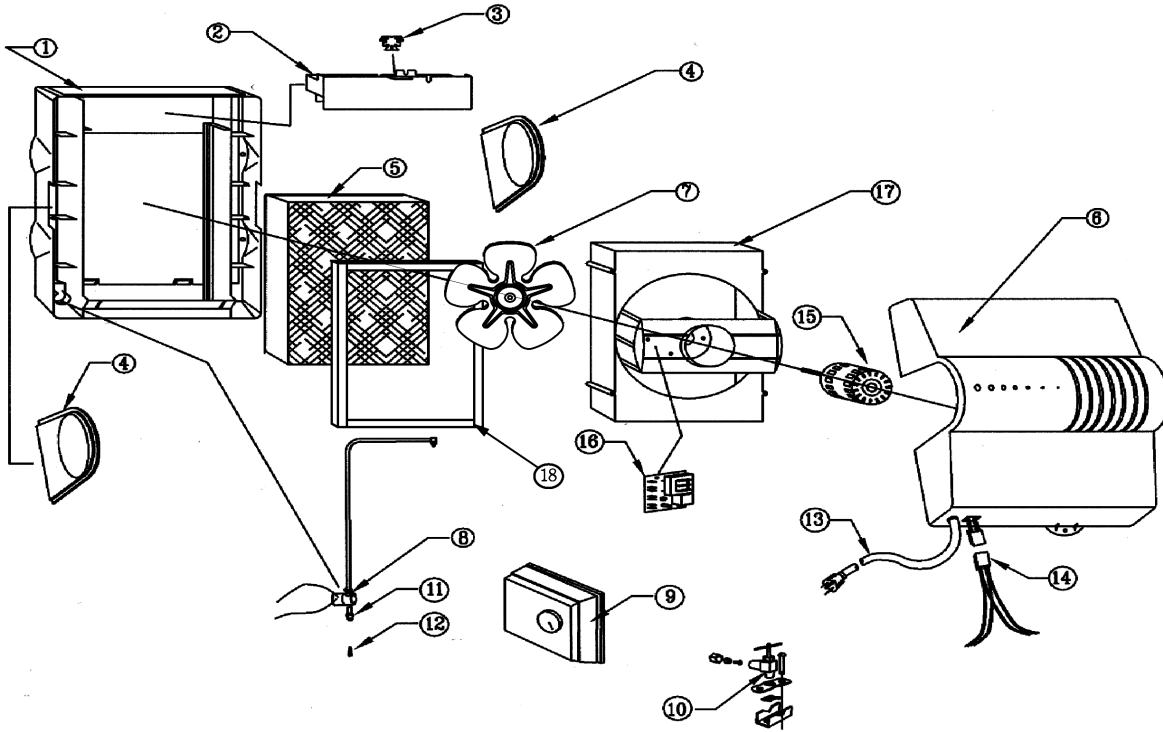


# Model 2002 Replacement Parts



Key #	Part Number	Std. Pkg.	Description	Ship Wt Lbs.
1	000-1730-091	1	Mounting Base	3
2	000-0602-055	1	Drip Tray	1
3	000-1317-091	1	Wick	1
4	000-1730-089	1	Solid Side Piece	1
5	A04-1725-051	12	Replacement Media with Wick	16
6	A00-0641-169	1	Cover (Includes Label,Screw,& Retaining Washer)	3
7	000-1318-080	1	10" Diameter Fan Blade	1
8	A01-0814-148	1	24 Volt Solenoid ( Universal Kit )	1
9	SK0-0055-001	1	Manual Humidistat for 2002	1
10	A00-1128-005	1	Saddle Valve	1
11	000-1106-037	1	Orifice & Filter Fitting, Includes Filter (Key #12) Compression Nut and Ferrule	1
12	000-1319-051	1	Inline Filter	1
13	000-0811-123	1	Power Supply Cord	1
14	000-0811-122	1	2 piece Connector Assembly	1
15	000-1721-048	1	Fan Motor	4
16	000-0431-034	1	Isolation Relay	1
17	000-1730-092	1	Fan Shroud	1
18	A00-1715-030	1	Stainless Steel Pad Frame	2
Not shown	K00-2000-000	1	Small Parts Kit (Includes: Cover Screw & Retainer, Water Feed Tube, 90° Brass Elbow, Elbow Retainer & Screw)	1



Phone (Toll-Free): 888-SKUTTLE (888-758-8853)

Fax: 740-373-9565

Skuttle Hours: 8:00 AM to 4:30 PM M-F (Eastern Standard Time)

E-mail: [orderentry@skuttle.com](mailto:orderentry@skuttle.com) | [www.skuttle.com](http://www.skuttle.com)