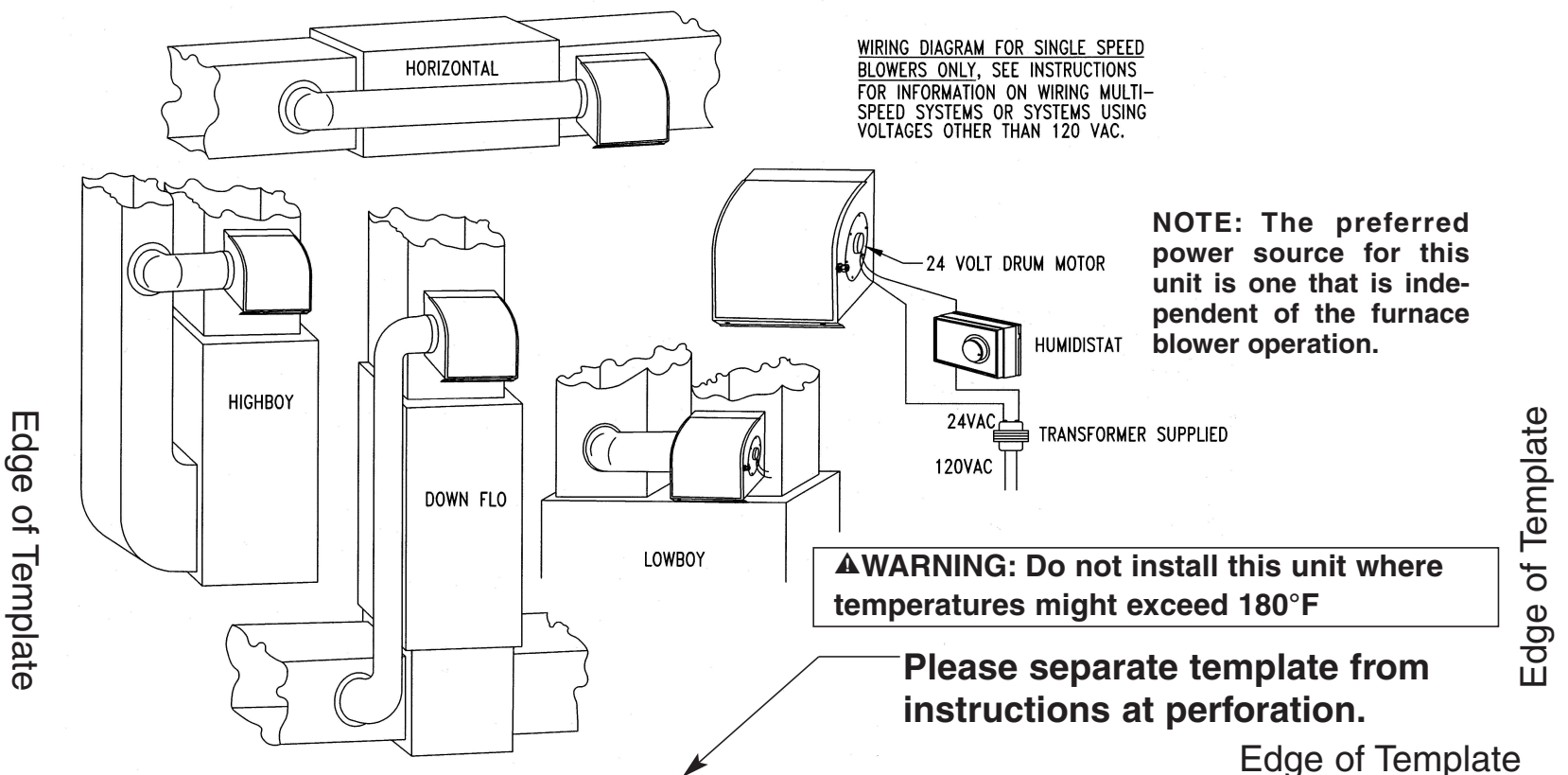


# ATTACH TEMPLATE TO VERTICAL SIDE SURFACE OF FURNACE PLENUM MODEL 90 SH HUMIDIFIER MOUNTING TEMPLATE

**▲DANGER: MAKE SURE YOU ARE NOT CUTTING OR DRILLING INTO ANY AIR CONDITIONING OR ELECTRICAL ACCESSORIES DURING INSTALLATION.**

**▲CAUTION: This template must be level from side to side and front to back before drilling or cutting.**



**WARNING: Absolutely DO NOT attempt to install this humidifier with plastic water supply tubing. USE COPPER TUBING ONLY!**

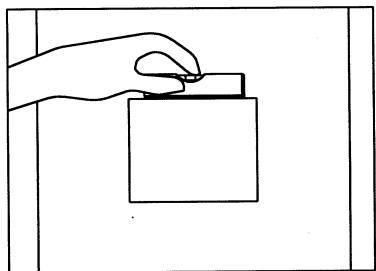
Unit is easily reversible for right- or left-hand installation. Read instructions completely before beginning installation.  
**▲ CAUTION: DO NOT INSTALL WHERE FREEZING TEMPERATURES COULD OCCUR.**

**▲ CAUTION:** You must comply with all local codes, ordinances and regulations pertaining to plumbing and electrical wiring.

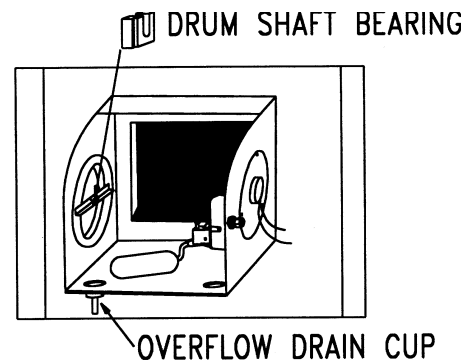
When installing unit in areas where water damage could result in the event of an overflow, install a suitable safety catch pan plumbed to a drain.

This unit is shipped as a right-hand bypass, and can be reversed. **NOTE:** When reversing, always reverse the float valve. The float valve should always be mounted on the same side as the drum motor.

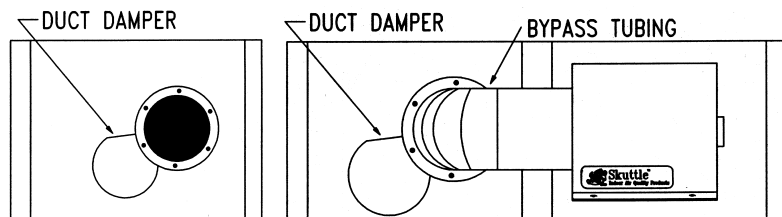
**NOTE:** If the system contains a multi-speed blower motor, it is necessary to isolate the humidifier transformer to **PREVENT PREMATURE BURNOUT** caused by the inductive current produced by the motor during high speed operation. This can be accomplished by many different types of wiring and accessories, such as using a pressure sensor or fan sail switch to detect blower operation, and an independent electrical circuit to power the humidifier transformer.



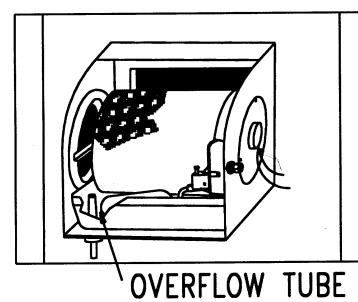
**1.** After determining the best location for the humidifier, draw a level line on the plenum and tape the template in position. Trace around the template, then remove template and connect any blank spaces where the tape was removed. Now carefully cut the rectangular opening. Insert cabinet in opening and make sure it is level. Mark the location of the five mounting holes. Remove cabinet and drill five 7/64" mounting holes. Replace the cabinet and secure with self tapping screws.



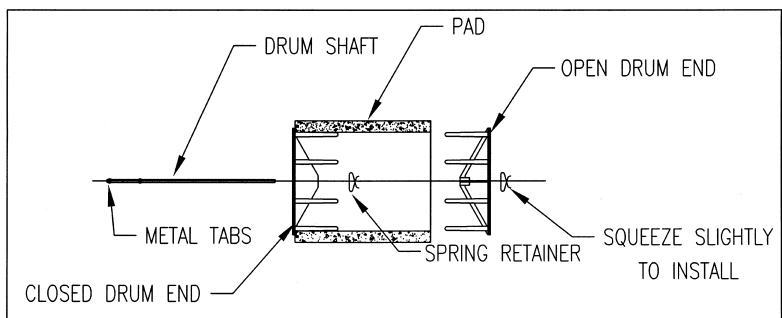
**2.** On the inside of the cabinet where the bypass tube will connect, snap the drum shaft bearing in place with the "U" shape of the bearing pointing up.



**3.** Install the 6" collar on the other plenum and connect a 6" bypass tube from the collar to the unit with sheet metal screws. Seal connections with duct tape. If the furnace has air conditioning, install the duct damper for summer season shutoff.



**4.** Insert the overflow drain cup fitting in the bottom of the cabinet so that the cup will be toward the front and on the same side as the bypass tubing. Place the water pan in the unit with the overflow tube over the drain fitting previously installed. Attach 3/8" I.D. tubing to the drain fitting and route continuously downward to a suitable waste drain for overflow protection. Insert the valve hole plug in the double "D" hole on the opposite side from the valve.



**5.** Assemble the drum and evaporator pad as shown. Install by inserting it into the motor, coupling end first, then snapping it into the bearing end.

**6.** Install the saddle valve (using the instructions on the bag) on the nearest cold water pipe. Connect tubing and route it to the humidifier, making sure to avoid contact with hot surfaces and sharp edges. Flush tubing before connecting it to the humidifier. **For correct float valve and water tubing installation, see the float valve instruction card, located either on the humidifier water valve or in the parts bag.**

**7.** Turn water on at saddle valve and adjust the water level to 1-3/8" deep by turning the adjustment screw on the valve clockwise to lower and counterclockwise to raise.

**8.** Turn off the electrical power. Mount the transformer to the location selected and wire the 120 volt side. Wire the drum motor, transformer and humidistat as shown on the mounting template wiring diagram.

**9.** The humidistat supplied is a universal duct- or wall-mount unit. For positioning and installing the humidistat, follow the instructions supplied in the parts bag.



101 Margaret St. Marietta, Ohio 45750  
740-373-9169 800-848-9786 Fax:  
740-373-9565 www.skuttle.com

Refer to the Maintenance Instructions for proper testing. Make final adjustments before completing the installation.